

**JUSTAR**

**INTERNATIONAL**

QINGDAO JUSTAR IMPORT AND  
EXPORT CO.,LTD

*Just service  
for trucks*



QINGDAO JUSTAR  
IMPORT AND  
EXPORT CO.,LTD

[www.cnjustar.com](http://www.cnjustar.com)

# 01 About us



## ***JUSTAR INTERNATIONAL***

JUSTAR INTERNATIONAL(JST) was established in 2015, it consists of three branch companies (QINGDAO JUSTAR IMPORT AND EXPORT CO., LTD; QINGDAO SUPER WHEEL INDUSTRIAL DEVELOPMENT CO., LTD and ZHEJIANG BOSIKAI AUTO PARTS TECHNOLOGY CO., LTD). With many years of experiences in manufacturing and marketing, We had achieved remarkable fame in international markets like Brazil, Russia, South Africa etc . Our products had acquired many certificates like DOT, TUV, EAC, INMETRO etc.

We are specializing in high-quality truck wheels, truck tires and accessories, offering high-quality products and best service are our firm target. Hope to establish a win-win cooperation with friends all over the world. We are JST, JUST SERVICE FOR TRUCKS



**JUSTAR INTERNATIONAL**  
has acquired following certifications.



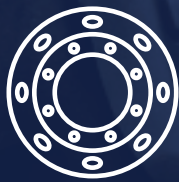
# 02 Factory



Our factories own the advanced production equipments like forming machines, welding machines, painting production lines and strict quality control system, we can promise to our customers with good quality products and best service.

*focus  
professional  
quality*

# 03 Products



**WHEELS**



**TIRES**



**AUTOPARTS**

Part Number	Size	P.C.D (mm)	Bolt Holes	C.B.D (mm)	Bolt Hole Type	Offset (mm)	Valve	Load Capacity (kgs)	Rec Tyre
JST L17602	17.5x6.00	φ203.2	5-φ29	φ146	SR22	114	TR554D	1600	215/70R17.5
JST L17603	17.5x6.00	φ205	6-φ21	φ161	1x45°	114	TR554D	2000	215/70R17.5
JST L17604	17.5x6.00	φ208	5-φ32	φ150	SR22	116.6	TR554D	2000	215/70R17.5
JST L17605	17.5x6.00	φ222.25	6-φ32	φ164	SR22	116	TR554D	2000	215/70R17.5
JST L17606	17.5x6.00	φ225	10-φ26	φ176	1x45°	114	TR554D	2000	215/70R17.5

Part Number	Size	P.C.D (mm)	Bolt Holes	C.B.D (mm)	Bolt Hole Type	Offset (mm)	Valve	Load Capacity (kgs)	Rec Tyre
JST L17671	17.5x6.75	φ222.25	6-φ32	φ165	SR22	120	TR554D	2500	235/75R17.5
JST L17672	17.5x6.75	φ222.25	6-φ24	φ164	1x45°	120	TR554D	2500	235/75R17.5
JST L17673	17.5x6.75	φ245	6-φ24	φ202	1x45°	120	TR554D	2500	235/75R17.5
JST L17674	17.5x6.75	φ275	8-φ24	φ221	1x45°	120	TR554D	2500	235/75R17.5
JST L17675	17.5x6.75	φ275	8-φ26	φ221	1x45°	120	TR554D	2500	235/75R17.5

Part Number	Size	P.C.D (mm)	Bolt Holes	C.B.D (mm)	Bolt Hole Type	Offset (mm)	Valve	Load Capacity (kgs)	Rec Tyre
JST L22831	22.5x8.25	φ275	10-φ26	φ2210	1x45°	167	TR554D	3650	11R22.5
JST L22832	22.5x8.25	φ285	8-φ32	φ221	1x45°	167	TR554D	3650	11R22.5
JST L22845	22.5x8.25	φ285.75	10-φ26	φ220	1x45°	167	TR554D	3650	11R22.5
JST L22846	22.5x8.25	φ285.75	10-φ26	φ221	SR22	167	TR554D	3650	11R22.5
JST L22855	22.5x8.25	φ335	10-φ26	φ281.2	1x45°	167	TR554D	3650	11R22.5
JST L22856	22.5x8.25	φ335	10-φ32	φ281.2	1x45°	167	TR554D	3650	11R22.5



Part Number	Size	P.C.D (mm)	Bolt Holes	C.B.D (mm)	Bolt Hole Type	Offset (mm)	Valve	Load Capacity (kgs)	Rec Tyre
JST L22944	22.5x9.0	φ285.75	10-φ26	φ221	1x45°	176	70MS-07	4125	315/80R22.5
JST L22945	22.5x9.0	φ285.75	10-φ32	φ221	1x45°	176	70MS-07	4125	315/80R22.5
JST L22955	22.5x9.0	φ335	10-φ26	φ281.2	1x45°	176	V3-20-1A	4700	315/80R22.5
JST L22957	22.5x9.0	φ335	10-φ32	φ281.2	1x45°	176	V3-20-1A	4700	315/80R22.5

Part Number	Size	P.C.D (mm)	Bolt Holes	C.B.D (mm)	Bolt Hole Type	Offset (mm)	Valve	Load Capacity (kgs)	Rec Tyre
JST L22155	22.5x11.75	φ285.75	10-φ26	φ220	1x45°	0	TR553E	4500	385/65R22.5
JST L22156	22.5x11.75	φ285.75	10-φ26	φ220	1x45°	120	40MS-00	4750	385/65R22.5
JST L22157	22.5x11.75	φ335	10-φ26	φ281.2	1x45°	0	TR553E	4500	385/65R22.5
JST L22158	22.5x11.75	φ335	10-φ26	φ281.2	1x45°	120	40MS-00	4750	385/65R22.5
JST L22159	22.5x11.75	φ395	10-φ26	φ281.2	1x45°	135	40MS-00	4750	385/65R22.5

Part Number	Size	P.C.D (mm)	Bolt Holes	C.B.D (mm)	Bolt Hole Type	Offset (mm)	Valve	Load Capacity (kgs)	Rec Tyre
JST L22351	22.5x13	φ285.75	10-φ26	φ220	1x45°	0	TR553E	5700	445/65R22.5
JST L22352	22.5x13	φ285.75	10-φ26	φ221	1x45°	120	TR553E	5700	445/65R22.5
JST L22353	22.5x13	φ335	10-φ26	φ281.2	1x45°	0	TR553E	5700	445/65R22.5
JST L22354	22.5x13	φ335	10-φ26	φ281	1x45°	75	TR553E	5700	445/65R22.5
JST L22355	22.5x13	φ335	10-φ26	φ281	1x45°	120	TR553E	5700	445/65R22.5

Part Number	Size	P.C.D (mm)	Bolt Holes	C.B.D (mm)	Bolt Hole Type	Offset (mm)	Valve	Load Capacity (kgs)	Rec Tyre
JST L22451	22.5x14	φ285.75	10-φ26	φ220	1x45°	0	TR553E	6210	445/65R22.5
JST L22452	22.5x14	φ285.75	10-φ26	φ221	1x45°	120	TR553E	6210	445/65R22.5
JST L22453	22.5x14	φ335	10-φ26	φ281.2	1x45°	0	TR553E	5810	445/65R22.5
JST L22454	22.5x14	φ335	10-φ26	φ281.2	1x45°	75	TR553E	5810	445/65R22.5
JST L22455	22.5x14	φ335	10-φ27	φ281.2	1x45°	120	TR553E	5810	445/65R22.5

Part Number	Size	P.C.D (mm)	Bolt Holes	C.B.D (mm)	Bolt Hole Type	Offset (mm)	Valve	Load Capacity (kgs)	Rec Tyre
JST G17602	17.5x6.00	φ203.2	5-φ29	φ146	SR22	128	V3-20-4	1700	8R17.5
JST G17603	17.5x6.00	φ205	6-φ21.5	φ161	1x45°	127	V3-20-4	1700	8R17.5
JST G17604	17.5x6.00	φ208	5-φ32	φ150	SR22	127	V3-20-4	1700	8R17.5
JST G17605	17.5x6.00	φ222.25	6-φ32	φ164	SR22	118	V3-20-4	1700	8R17.5
JST G17606	17.5x6.00	φ225	10-φ26	φ176	1x45°	135	V3-20-4	1700	8R17.5

Part Number	Size	P.C.D (mm)	Bolt Holes	C.B.D (mm)	Bolt Hole Type	Offset (mm)	Valve	Load Capacity (kgs)	Rec Tyre
JST G17671	17.5x6.75	φ203.2	5-φ29	φ146	SR22	127	V3-20-4	2000	9R17.5
JST G17672	17.5x6.75	φ205	6-φ21	φ161	1x45°	127	V3-20-4	2000	9R17.5
JST G17673	17.5x6.75	φ208	5-φ32	φ150	SR22	127	V3-20-4	2000	9R17.5
JST G17674	17.5x6.75	φ222.25	6-φ32	φ164	SR22	135	V3-20-4	2000	9R17.5
JST G17675	17.5x6.75	φ225	10-φ26	φ176	1x45°	127	V3-20-4	2000	9R17.5
JST G17676	17.5x6.75	φ275	8-φ26	φ221	1x45°	142	V3-20-4	2000	9R17.5

Part Number	Size	P.C.D (mm)	Bolt Holes	C.B.D (mm)	Bolt Hole Type	Offset (mm)	Valve	Load Capacity (kgs)	Rec Tyre
JST G22831	22.5x8.25	φ275	8-φ24	φ221	1x45°	169	V3-20-4	3000	11R22.5
JST G22832	22.5x8.25	φ285	8-φ32	φ221	SR22	165	V3-20-4	3000	11R22.5
JST G22845	22.5x8.25	φ285.75	10-φ26	φ221	1x45°	169	V3-20-4	3000	11R22.5
JST G22846	22.5x8.25	φ285.75	10-φ26	φ222	SR22	169	V3-20-4	3000	11R22.5
JST G22855	22.5x8.25	φ335	10-φ26	φ281	1x45°	169	V3-20-4	3000	11R22.5
JST G22856	22.5x8.25	φ335	10-φ27	φ281	SR18	169	V3-20-4	3000	11R22.5





Part Number	Size	P.C.D (mm)	Bolt Holes	C.B.D (mm)	Bolt Hole Type	Offset (mm)	Valve	Load Capacity (kgs)	Rec Tyre
JST G22931	22.5x9.0	φ275	8-φ24	φ221	1x45°	175	V3-20-6	3750	12R22.5
JST G22932	22.5x9.0	φ275	8-φ26	φ221	1x45°	0	V3-20-5	3750	12R22.5
JST G22933	22.5x9.0	φ285	8-φ32	φ221	SR22	160	V3-20-6	3750	12R22.5
JST G22944	22.5x9.0	φ285.75	10-φ32	φ222	SR22	175	TR573-C19	3750	12R22.5
JST G22945	22.5x9.0	φ285.75	10-φ26	φ220	1x45°	169	V3-20-6	3750	12R22.5
JST G22955	22.5x9.0	φ335	10-φ26	φ281	1x45°	175	V3-20-6	3750	12R22.5
JST G22957	22.5x9.0	φ335	10-φ27	φ281	SR18	0	V3-20-5	3750	12R22.5

Part Number	Size	P.C.D (mm)	Bolt Holes	C.B.D (mm)	Bolt Hole Type	Offset (mm)	Valve	Load Capacity (kgs)	Rec Tyre
JST G22151	22.5x11.75	φ275	8-φ24	φ221	1x45°	0	TR572C	4250	385/65R22.5
JST G22152	22.5x11.75	φ275	8-φ26	φ221	1x45°	120	TR572C	4250	385/65R22.5
JST G22153	22.5x11.75	φ285	8-φ32	φ220	1x45°	0	TR572C	4250	385/65R22.5
JST G22154	22.5x11.75	φ285	10-φ26	φ222	1x45°	120	TR572C	4250	385/65R22.5
JST G22155	22.5x11.75	φ285.75	10-φ26	φ220	1x45°	0	TR572C	4250	385/65R22.5
JST G22156	22.5x11.75	φ285.75	10-φ26	φ281	1x45°	120	TR572C	4250	385/65R22.5
JST G22157	22.5x11.75	φ335	10-φ26	φ281	1x45°	0	V3-20-5	4250	385/65R22.5
JST G22158	22.5x11.75	φ335	10-φ26	φ281	SR18	120	V3-20-5	4250	385/65R22.5

Part Number	Size	P.C.D (mm)	Bolt Holes	C.B.D (mm)	Bolt Hole Type	Offset (mm)	Valve	Load Capacity (kgs)	Rec Tyre
JST G22351	22.5x13	φ285.75	10-φ26	φ220	1x45°	0	TR572C	5150	425/65R22.5
JST G22352	22.5x13	φ285.75	10-φ27	φ220	1x45°	75	TR572C	5150	425/65R22.5
JST G22353	22.5x13	φ285.75	10-φ26	φ220	1x45°	120	TR572C	5150	425/65R22.5
JST G22354	22.5x13	φ335	10-φ26	φ281	1x45°	0	TR572C	5150	425/65R22.5
JST G22355	22.5x13	φ335	10-φ27	φ281	SR18	75	TR572C	5150	425/65R22.5
JST G22356	22.5x13	φ335	10-φ26	φ281	1x45°	120	TR501	5150	425/65R22.5

Part Number	Size	P.C.D (mm)	Bolt Holes	C.B.D (mm)	Bolt Hole Type	Offset (mm)	Valve	Load Capacity (kgs)	Rec Tyre
JST G22451	22.5x14	φ275	10-φ26	φ221	1x45°	0	TR501	5600	445/65R22.5
JST G22452	22.5x14	φ285.75	10-φ26	φ220	1x45°	0	TR572C	5600	445/65R22.5
JST G22453	22.5x14	φ335	10-φ26	φ281	1x45°	0	TR501	5600	445/65R22.5
JST G22454	22.5x14	φ335	10-φ26	φ281	1x45°	75	TR572C	5600	445/65R22.5
JST G22455	22.5x14	φ335	10-φ27	φ281	SR18	120	TR572C	5600	445/65R22.5

Part Number	Size	P.C.D (mm)	Bolt Holes	C.B.D (mm)	Bolt Hole Type	Offset (mm)	Valve	Load Capacity (kgs)	Rec Tyre
JST D22851	22.5x7.5					110	V3-20-4	2575	11R22.5
JST D22852	22.5x8.25					120	V3-20-4	3000	11R22.5
JST D22853	22.5x8.25					120	V3-20-6	3000	11R22.5
JST D22854	22.5x9.0					116	V3-20-4	3750	11R22.5
JST D22855	22.5x9.0					130	V3-20-6	3750	11R22.5
JST D22856	24.5x9.0					127	V3-20-6	3550	11R22.5

Part Number	Size	P.C.D (mm)	Bolt Holes	C.B.D (mm)	Bolt Hole Type	Offset (mm)	Valve
JST X85203	8.5-20	φ335	10-φ26	φ281	1x45°	175	TR572C
JST X85204	8.5-20	φ285.75	10-φ26	φ220	1x45°	169	V3-20-4
JST X85244	8.5-24	φ335	10-φ26	φ281	1x45°	175	TR572C
JST X85245	8.5-24	φ285.75	10-φ26	φ220	1x45°	169	V3-20-4



*focus  
professional  
quality*

## ***TBR TYRE***

---

### ***Just service for trucks***

We supply a wide variety of TBR (truck, bus radial) tires , LTR (light truck radial )tires and radial off-the-road tires , Our tires had acquired the certifications like “DOT, ECE, S-MARK, IN-METRO AND GCC” etc. All tires have followed Reach Act and Tires Labelling of Europe market equipments.



## BT168

- All position application
- Applicable to various road surfaces
- With good performance in anti-cracking and tear resistance
- The pattern is good in low heating up and high speed performance



## BT215

- Mainly for directional and steel axle for long distance transport
- Applicable for high way and good road surface with high speed;
- With excellent wear resistance and anti-skidding With low heating up, good high speed and safty performance.



## BT218

- Mainly for long haul of steer and trailer wheels
- Applicable to ride on good road and highway
- With good skid resistance and performance of water drainage
- This pattern has low heating up and low rolling resistance performance



## BT219

- This pattern has low heating up and low rolling resistance performance
- Applicable for high speed ride on highway and good roads
- With wide tread design to extend tire service life
- This pattern has performance in low heating up and rolling resistance



## BT369

- For long haul application of truck and all positions wheels on good roads
- With wide tread design to extend tire service life
- With excellent water drainage and heat dispersion performance
- This pattern has performance in low heating up and rolling resistance



## BT388

- For regional application of drive axle
- Applicable to various road surface on freeway
- With good grip and traction performance
- Excellent wear resistance and long mileage



## BT518

- All position application
- Mainly for good road surface
- With good grip and excellent traction performance
- The pattern has good performance in low heating up and carrying capacity



## BT566

- Close shoulder design
- Mainly for drive wheel
- Fuel saving for low rolling resistance
- Excellent water drainage
- Excellent grip and traction performance



## BT588

- For regional application of drive axle
- Applicable for mud and snow road
- Excellent grip and traction performance
- With good performance of water drainage and skid resistance
- This pattern has low heating up and good high speed performance



## BT618

- Applicable for drive axle
- Riding on normal and good road conditions
- With good grip and tranction performance
- Good wear resistance and long mileage, excellent high speed performance



## BT968

- Mainly for long haul application of steer wheel, also applicable for trailer wheels
- Applicable to ride on high way and good road with high speed
- With good performance of water drainage and skid resistance
- This pattern has low heating up and low rolling resistance performance



## TA228

- All positions, fit for medium and long distance hiah speed on well paved road
- Excellent drive performance and handling performance
- Widened running surface and optimized grounding pressure, outstanding wear.



## TA258

- All positions, fit for medium and long distance, high speed on well paved road.
- Excellent drive performance and handling performance
- Widened running surface and optimized grounding pressure, outstanding wear



## TA268

- All positions, fit for driving on various roads.
- Mature pattern design, superior traction performance braking performance and wet sliding resistance
- High efficiency of heat dissipation and strong driving force due to large tread groove on shoulder



## TD658

- Mainly applicable to the drive shaft of vehicles with fixed load lona distance and high speed drivina on aood pavement
- Deep groove and wide driving surface design, withsuperior high wear life
- Special block pattern design, with higher braking and drivina.



## TD668

- This pattern has low heating up and low rolling resistance performance
- Applicable for high speed ride on highway and good roads
- With wide tread design to extend tire service life
- This pattern has performance in low heating up and rolling resistance



## TD698

- Suitable for short/middle distance, running on mixed pavements and secondary road
- Large-scale and longitudinal groove mixed pattern, excellent driving force and braking force
- Wide driving surface design, longer wear life



## TF128

- Medium and long distance, high speed on well paved road
- Four straight-line and wave pattern around the bottom groove improved the handling performance
- Low-heat generation, low noise, low-rolling resistance

SIZE	PATTERN	TYPE	NEW TYE INFLATED DIMENSIONS(mm)		LOAD INDEX	MAX LOAD (kg)	PRESSURE	Speed Rating	STANDARD RIM	TREAD DEPTH (mm)
			SECTION WIDTH	OVERAL DIAMETER						
385/65 R22.5	BT215	TL	389	1072	158	4250	830/830	M	11.75	15.0
		TL	389	1072	160	4500	900/900	K	11.75	
	BT518	TL	389	1072	158	4250	830/830	L	11.75	17.0
		TL	389	1072	160	4500	900/900	K	11.75	
	BT668	TL	389	1072	158	4250	830/830	L	11.75	15.0
		TL	389	1072	160	4500	900/900	K	11.75	
	TF158	TL	288	1072	160	4500	900/900	K	11.75	14.5
	TF168	TL	288	1072	160	4500	900/900	K	11.75	

SIZE	PATTERN	TYPE	NEW TYRE INFLATED DIMENSIONS(mm)		LOAD INDEX	MAX LOAD (kg)	PRESSURE	Speed Rating	STANDARD RIM	TREAD DEPTH (mm)
			SECTION WIDTH	OVERAL DIAMETER	SINGLE/DUAL	SINGLE/DUAL kg	SINGLE/DUAL kpa			
11R22.5	BT168	TL	279	1054	144/142	2800/2650	720/720	M	8.25	16.0
		TL	279	1054	148/145	3150/2900	850/850	M	8.25	
	BT212	TT	279	1054	144/142	2800/2650	720/720	M	8.25	14.0
		TL	279	1054	146/143	3000/2725	830/830	M	8.25	
	BT212N	TL	279	1054	144/142	2800/2650	720/720	M	8.25	14.0
		TL	279	1054	146/143	3000/2725	830/830	M	8.25	
	BT218	TL	279	1054	144/142	2800/2650	720/720	M	8.25	14.8
		TL	279	1050	148/145	3150/2900	850/850	M	8.25	
	BT219	TL	279	1054	144/142	2800/2650	720/720	M	8.25	14.8
		TL	279	1054	146/143	3000/2725	830/830	M	8.25	
	BT369	TL	279	1054	144/142	2800/2650	720/720	L	8.25	17.5
		TL	279	1054	146/143	3000/2725	830/830	L	8.25	
	BT388	TL	279	1054	144/142	2800/2650	720/720	M	8.25	20.0
		TL	279	1050	148/145	3150/2900	850/850	M	8.25	
	BT556	TL	279	1054	144/142	2800/2650	720/720	L	8.25	20.5
		TL	279	1054	146/143	3000/2725	830/830	L	8.25	
	BT588	TL	279	1054	144/142	2800/2650	720/720	M	8.25	20.0
		TL	279	1050	148/145	3150/2900	850/850	M	8.25	
BT669	TL	279	1054	144/142	2800/2650	720/720	M	8.25	10.0	
	TL	279	1054	146/143	3000/2725	830/830	M	8.25		
TA268	TL	279	1054	146/143	3000/2725	830/830	M	8.25	14.5	
TD528	TL	279	1054	146/143	3000/2725	830/830	L	8.25	19.5	
TD698	TL	279	1050	146/143	3000/2725	830/830	L	8.25	18.5	
TF118	TL	279	1050	146/143	3000/2725	830/830	M	8.25	14.5	
TF128	TL	279	1054	146/143	3000/2725	830/830	M	8.25	14.5	

SIZE	PATTERN	TYPE	NEW TYE INFLATED DIMENSIONS(mm)		LOAD INDEX	MAX LOAD (kg)	PRESSURE	Speed Rating	STANDARD RIM	TREAD DEPTH (mm)
			SECTION WIDTH	OVERAL DIAMETER	SINGLE/DUAL	SINGLE/DUAL kg	SINGLE/DUAL kpa			
12R22.5	BT168	TL	300	1085	146/143	3000/2725	720/720	L	9	17.5
		TL	300	1085	150/147	3350/3075	830/830	L	9	
		TL	300	1085	152/149	3550/3250	930/930	L	9	
	BT218	TL	300	1085	146/143	3000/2725	720/720	M	9	14.8
		TL	300	1084	152/148	3550/3150	850/850	M	9	
		TL	300	1085	152/149	3550/3250	930/930	L	9	
	BT618	TL	300	1085	146/143	3000/2725	720/720	M	9	18.3
		TL	300	1084	152/148	3550/3150	850/850	M	9	
		TL	300	1085	152/149	3550/3250	930/930	L	9	
	TA228	TL	300	1085	152/149	3550/3250	930/930	M	9	15.0
	TA258	TL	300	1084	152/149	3550/3250	930/930	M	9	15.0
	TA268	TL	300	1084	152/149	3550/3250	930/930	M	9	15.0
	TA299	TL	300	1093	152/149	3550/3250	930/930	M	9	15.0
	TD518	TL	300	1084	152/149	3550/3250	930/930	L	9	19.0
	TD658	TL	300	1084	152/149	3550/3250	930/930	L	9	19.0
TD698	TL	300	1084	152/149	3550/3250	930/930	L	9	19.0	
TD958	TL	230	1096	152/149	3550/3250	930/930	L	9	23.0	
TF128	TL	300	1084	152/149	3550/3250	930/930	M	9	15.0	

SIZE	PATTERN	TYPE	NEW TYRE INFLATED DIMENSIONS(mm)		LOAD INDEX	MAX LOAD (kg)	PRESSURE	Speed Rating	STANDARD RIM	TREAD DEPTH (mm)
			SECTION WIDTH	OVERAL DIAMETER	SINGLE/DUAL	SINGLE/DUAL kg	SINGLE/DUAL kpa			
315/80 R22.5	BT168	TL	312	1076	154/151	3750/3450	830/830	M	9	15.0
		TL	312	1076	156/150	4000/3550	850/850	M	9	
295/80 R22.5	BT219	TL	298	1044	150/147	3350/3075	830/830	L	9	14.8
		TL	298	1044	152/149	3550/3250	900/900	M	9	
315/80 R22.5	BT219	TL	312	1076	154/151	3750/3450	830/830	M	9	15.5
		TL	312	1076	156/150	4000/3550	850/850	L	9	
275/80 R22.5	BT219	TL	276	1012	145/143	2900/2725	750/750	L	8.25	15.0
		TL	276	1012	149/146	3250/3000	850/850	L	8.25	
295/80 R22.5	BT369	TL	298	1044	150/147	3350/3075	830/830	L	9	18.0
		TL	298	1044	152/149	3550/3250	900/900	M	9	
315/80 R22.5	BT369	TL	312	1076	154/151	3750/3450	830/830	M	9	18.0
		TL	312	1076	156/150	4000/3550	850/850	L	9	
295/80 R22.5	BT388	TL	298	1044	150/147	3350/3075	830/830	L	9	20.5
		TL	298	1044	152/149	3550/3250	900/900	M	9	
315/80 R22.5	BT388	TL	312	1076	154/151	3750/3450	830/830	M	9	21.0
		TL	312	1076	156/150	4000/3550	850/850	L	9	
295/80 R22.5	BT388N	TL	298	1044	150/147	3350/3075	830/830	L	9	21.0
		TL	298	1044	152/149	3550/3250	900/900	M	9	
315/80 R22.5	BT388N	TL	312	1076	154/151	3750/3450	830/830	M	9	21.0
		TL	312	1076	156/150	4000/3550	850/850	L	9	
295/80 R22.5	BT588	TL	298	1044	150/147	3350/3075	830/830	L	9	21.0
		TL	298	1044	152/149	3550/3250	900/900	M	9	
315/80 R22.5	BT588	TL	312	1076	154/151	3750/3450	830/830	M	9	21.0
		TL	312	1076	156/150	4000/3550	850/850	L	9	
295/80 R22.5	BT968	TL	298	1044	150/147	3350/3075	830/830	M	9	15.0
		TL	298	1044	152/149	3550/3250	900/900	M	9	
315/80 R22.5	BT968	TL	312	1076	154/151	3750/3450	830/830	M	9	15.0
		TL	312	1076	156/150	4000/3550	850/850	L	9	
315/80 R22.5	TA228	TL	235	1076	156/150	4000/3550	930/930	M	9	14.5
315/80 R22.5	TA268	TL	312	1076	156/150	4000/3550	850/850	M	9	
295/80 R22.5	TD658	TL	298	1044	152/149	3550/3250	900/900	L	9	19.5
315/80 R22.5		TL	312	1082	156/150	4000/3550	850/850	L	9	19.0
295/80 R22.5	TF128	TL	298	1044	152/149	3550/3250	900/900	M	9	14.5
315/80 R22.5		TL	312	1076	156/150	4000/3550	850/850	M	9	



*focus  
professional  
quality*

## ***THE MAIN AUTO PARTS PRODUCTS***

Brake chamber, Slack adjuster, Air driver valves,  
Wheel bolts and different kinds of nuts etc.





### BRAKE CHAMBER

**CY NO.:** CY01106  
**ORG NO.:** T30/30DD(sealed)  
**STROKE:** 64/64  
**PORT THREAD:** 3/8"NPT  
**BOLT THREAD:** 5/8"UNC  
**BOLT CENTRE:** 120.7  
**PUSH ROD THREAD:** 5/8"UNF  
**PUSH ROD LENGTH:** 285mm



### BRAKE CHAMBER

**CY NO.:** CY01107  
**ORG NO.:** T24/30DD(sealed)  
**STROKE:** 64/64  
**PORT THREAD:** 3/8"NPT  
**BOLT THREAD:** 5/8"UNC  
**BOLT CENTRE:** 120.7  
**PUSH ROD THREAD:** 5/8"UNF  
**PUSH ROD LENGTH:** 285mm



### BRAKE CHAMBER

**CY NO.:** CY01108  
**ORG NO.:** T24/30DD(disc)  
**STROKE:** 64/64  
**PORT THREAD:** M16 x 1.5  
**BOLT THREAD:** M16 x 1.5  
**BOLT CENTRE:** 120.7  
**PUSH ROD THREAD:** M16 x 1.5  
**PUSH ROD LENGTH:** 15mm



### BRAKE CHAMBER

**CY NO.:** CY01109  
**ORG NO.:** T24/24DD(disc)  
**STROKE:** 64/64  
**PORT THREAD:** M16 x 1.5  
**BOLT THREAD:** M16 x 1.5  
**BOLT CENTRE:** 120.7  
**PUSH ROD THREAD:** M16 x 1.5  
**PUSH ROD LENGTH:** 15mm



### BRAKE CHAMBER

**CY NO.:** CY01110  
**ORG NO.:** T20/24(disc)  
**STROKE:** 64/64  
**PORT THREAD:** M16 x 1.5  
**BOLT THREAD:** M16 x 1.5  
**BOLT CENTRE:** 120.7  
**PUSH ROD THREAD:** M16 x 1.5  
**PUSH ROD LENGTH:** 15mm



### BRAKE CHAMBER

**CY NO.:** CY01111  
**ORG NO.:** T16/24DD(disc)  
**STROKE:** 64/64  
**PORT THREAD:** M16 x 1.5  
**BOLT THREAD:** M16 x 1.5  
**BOLT CENTRE:** 120.7  
**PUSH ROD THREAD:** M16 x 1.5  
**PUSH ROD LENGTH:** 15mm



### BRAKE CHAMBER

**CY NO.:** CY01201  
**ORG NO.:** T30/30DP  
**STROKE:** 64/64  
**PORT THREAD:** M16 x 1.5  
**BOLT THREAD:** M16 x 1.5  
**BOLT CENTRE:** 120.7  
**PUSH ROD THREAD:** M16 x 1.5  
**PUSH ROD LENGTH:** 285mm



### BRAKE CHAMBER

**CY NO.:** CY01202  
**ORG NO.:** T24/30DP  
**STROKE:** 64/64  
**PORT THREAD:** M16 x 1.5  
**BOLT THREAD:** M16 x 1.5  
**BOLT CENTRE:** 120.7  
**PUSH ROD THREAD:** M16 x 1.5  
**PUSH ROD LENGTH:** 285mm



### BRAKE CHAMBER

**CY NO.:** CY01203  
**ORG NO.:** T30/24DP  
**STROKE:** 64/64  
**PORT THREAD:** M16 x 1.5  
**BOLT THREAD:** M16 x 1.5  
**BOLT CENTRE:** 120.7  
**PUSH ROD THREAD:** M16 x 1.5  
**PUSH ROD LENGTH:** 285mm



### BRAKE CHAMBER

**CY NO.:** CY01204  
**ORG NO.:** T24/24DP  
**STROKE:** 64/64  
**PORT THREAD:** M16 x 1.5  
**BOLT THREAD:** M16 x 1.5  
**BOLT CENTRE:** 120.7  
**PUSH ROD THREAD:** M16 x 1.5  
**PUSH ROD LENGTH:** 285mm



**BRAKE CHAMBER**

CY NO.: CY01205  
 ORG NO.: T20/24DP  
 STROKE: 64/64  
 PORT THREAD: M16 x 1.5  
 BOLT THREAD: M16 x 1.5  
 BOLT CENTRE: 120.7  
 PUSH ROD THREAD: M16 x 1.5  
 PUSH ROD LENGTH: 285mm



**BRAKE CHAMBER**

CY NO.: CY01206  
 ORG NO.: T16/24DP  
 STROKE: 64/64  
 PORT THREAD: M16 x 1.5  
 BOLT THREAD: M16 x 1.5  
 BOLT CENTRE: 120.7  
 PUSH ROD THREAD: M16 x 1.5  
 PUSH ROD LENGTH: 285mm



**BRAKE CHAMBER**

CY NO.: CY01207  
 ORG NO.: T30/30DP(disc)  
 STROKE: 64/64  
 PORT THREAD: M16 x 1.5  
 BOLT THREAD: M16 x 1.5  
 BOLT CENTRE: 120.7  
 PUSH ROD THREAD: M16 x 1.5  
 PUSH ROD LENGTH: 15mm



**BRAKE CHAMBER**

CY NO.: CY01208  
 ORG NO.: T24/24DP(disc)  
 STROKE: 64/64  
 PORT THREAD: M16 x 1.5  
 BOLT THREAD: M16 x 1.5  
 BOLT CENTRE: 120.7  
 PUSH ROD THREAD: M16 x 1.5  
 PUSH ROD LENGTH: 15mm



**BRAKE CHAMBER**

CY NO.: CY01209  
 ORG NO.: T20/24DP(disc)  
 STROKE: 64/64  
 PORT THREAD: M16 x 1.5  
 BOLT THREAD: M16 x 1.5  
 BOLT CENTRE: 120.7  
 PUSH ROD THREAD: M16 x 1.5  
 PUSH ROD LENGTH: 15mm



**BRAKE CHAMBER**

CY NO.: CY01210  
 ORG NO.: T16/24DP(disc)  
 STROKE: 64/64  
 PORT THREAD: M16 x 1.5  
 BOLT THREAD: M16 x 1.5  
 BOLT CENTRE: 120.7  
 PUSH ROD THREAD: M16 x 1.5  
 PUSH ROD LENGTH: 15mm



**BRAKE CHAMBER**

CY NO.: CY01211  
 ORG NO.: T30/30DP  
 STROKE: 57/57  
 PORT THREAD: M22 x 1.5  
 BOLT THREAD: M16 x 1.5  
 BOLT CENTRE: 120.7  
 PUSH ROD THREAD: M16 x 1.5  
 PUSH ROD LENGTH: 285mm



**BRAKE CHAMBER**

CY NO.: CY01212  
 ORG NO.: T24/24DP  
 STROKE: 57/57  
 PORT THREAD: M22 x 1.5  
 BOLT THREAD: M16 x 1.5  
 BOLT CENTRE: 120.7  
 PUSH ROD THREAD: M16 x 1.5  
 PUSH ROD LENGTH: 285mm



**BRAKE CHAMBER**

CY NO.: CY01213  
 ORG NO.: T20/24DP  
 STROKE: 57/57  
 PORT THREAD: M22 x 1.5  
 BOLT THREAD: M16 x 1.5  
 BOLT CENTRE: 120.7  
 PUSH ROD THREAD: M16 x 1.5  
 PUSH ROD LENGTH: 285mm

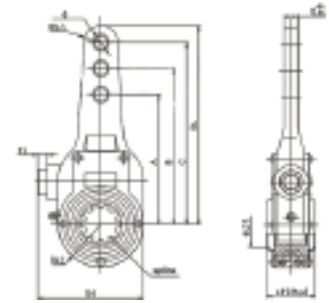


**BRAKE CHAMBER**


CY NO.: CY01214  
 ORG NO.: T16/24DP  
 STROKE: 57/57  
 PORT THREAD: M22 x 1.5  
 BOLT THREAD: M16 x 1.5  
 BOLT CENTRE: 120.7  
 PUSH ROD THREAD: M16 x 1.5  
 PUSH ROD LENGTH: 285mm




CY NO.:	Original	Spline	Arm Length						
			A	B	C	D	E	F	G
CY-02101	0517454700	1-1/2-10	120	150	180	250			
CY-02102	0517452610	1-1/2-10	120	150	180	220	250		
CY-02103	0517465220	1-1/2-10	120	135	150	165	180	250	
CY-02104	0517465130	1-1/2-10	120	135	150	165	180	195	250



CY NO.:	Midland	Bendix	Spline	Teeth	Arm Length		
					A	B	C
CY-02201	KN51000	---	1-1/2	10	--	--	6
CY-02202	KN55001	---	1-1/4	24	--	--	5 1/2
CY-02203	KN51010	---	1-1/2	28	--	--	6
CY-02204	KN44041	283411	1-3/5	37	--	--	6
CY-02205	KN47011	278321	1-1/2	10	--	5 1/2	6 1/2
CY-02206	KN49000	278294	1-1/4	10	--	4 1/2	5 1/2
CY-02207	KN48031	278302	1-1/4	10	--	4 1/2	5 1/2
CY-02208	KN47002	279316	1-1/2	10	--	4 1/2	5 1/2
CY-02209	KN48001	278303	1-1/4	10	--	5	6
CY-02210	KN47081	278312	1-1/2	10	--	5	6
CY-02211	KN44051	286965	1-1/2	28	--	5	6
CY-02213	KN44061	288753	1-1/2	28	--	5 1/2	6 1/2
CY-02214	KN47001	278323	1-1/2	10	5	6	7
CY-02215	KN48002	278305	1-1/4	10	5	6	7
CY-02216	KN44071	288282	1-1/2	28	5	6	7
CY-02217	KN44042	---	1-3/5	37	5	6	7

	<b>SLACK ADJUSTER</b>
	CY NO.: CY02301 ORG NO.: 346 420 173 8 Style: 1HOLE 26TEETH Arm Length: 145 Bushing: 14

	<b>SLACK ADJUSTER</b>
	CY NO.: CY02302 ORG NO.: 346 420 183 8 Style: 1HOLE 26TEETH Arm Length: 145 Bushing: 14

	<b>SLACK ADJUSTER</b>
	CY NO.: CY02303 ORG NO.: KN5100 Style: 1HOLE 10TEETH Arm Length: 6" Bushing:

	<b>SLACK ADJUSTER</b>
	CY NO.: CY02304 ORG NO.: 305 420 003 8 Style: 1HOLE 19TEETH Arm Length: 145 Bushing: 14

	<b>SLACK ADJUSTER</b>
	CY NO.: CY02305 ORG NO.: 288539 Style: 2HOLES 10TEETH Arm Length: 166.5,141.6 Spline: 1 1/2"

	<b>SLACK ADJUSTER</b>
	CY NO.: CY02306 ORG NO.: 288540 Style: 2HOLES 10TEETH Arm Length: 166.5,141.6 Spline: 1 1/2"

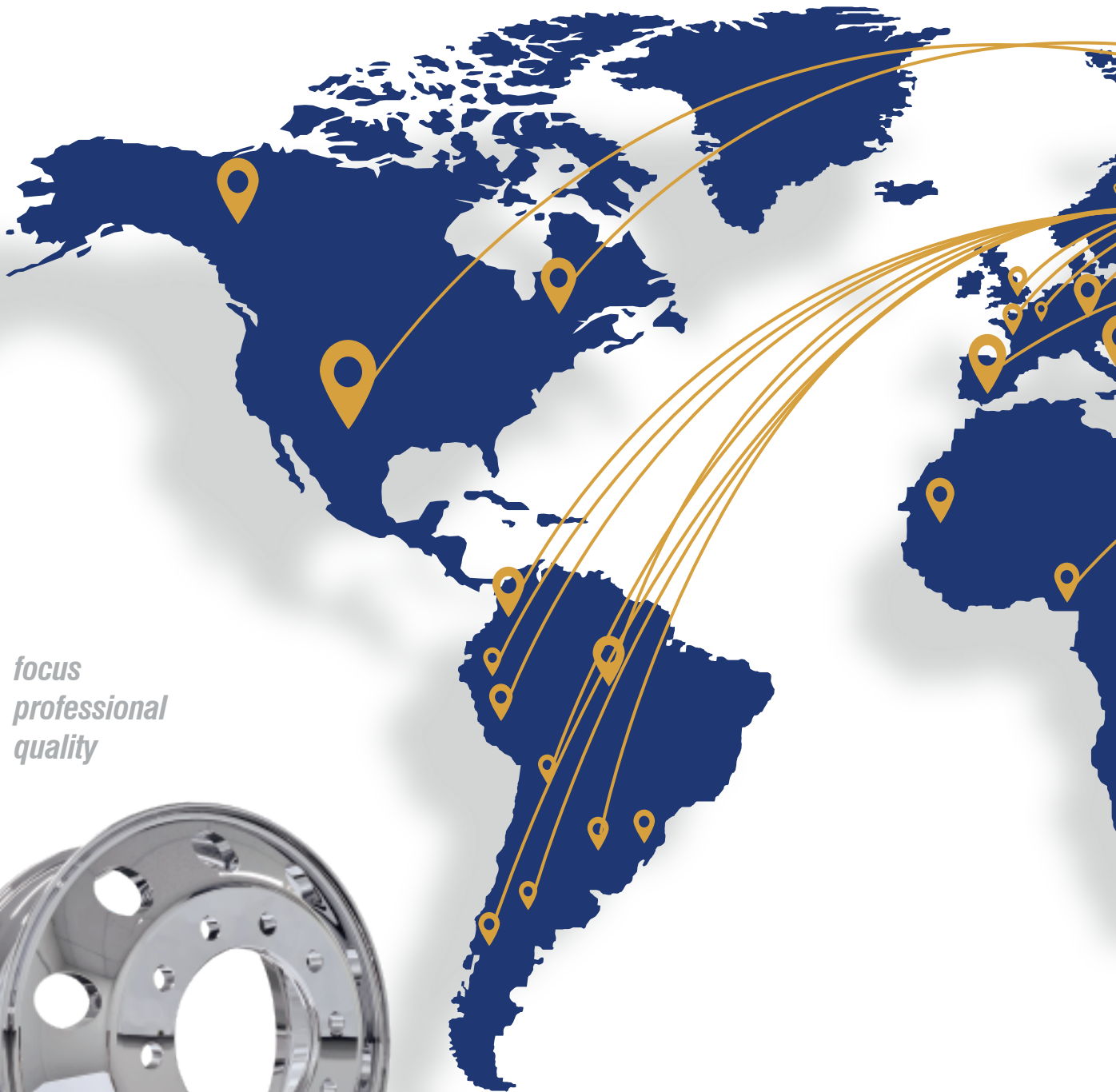
	<b>SLACK ADJUSTER</b>
	CY NO.: CY02307 ORG NO.: 5511-3502136 Style: 1HOLE 10TEETH Arm Length: 150 Bushing: 12.7

	<b>SLACK ADJUSTER</b>
	CY NO.: CY02308 ORG NO.: 5511-3502237 Style: 1HOLE 10TEETH Arm Length: 150 Bushing: 12.7

	<b>SLACK ADJUSTER</b>
	CY NO.: CY02309 ORG NO.: 5320-3502136 Style: 1HOLE 10TEETH Arm Length: 125 Bushing: 12.7

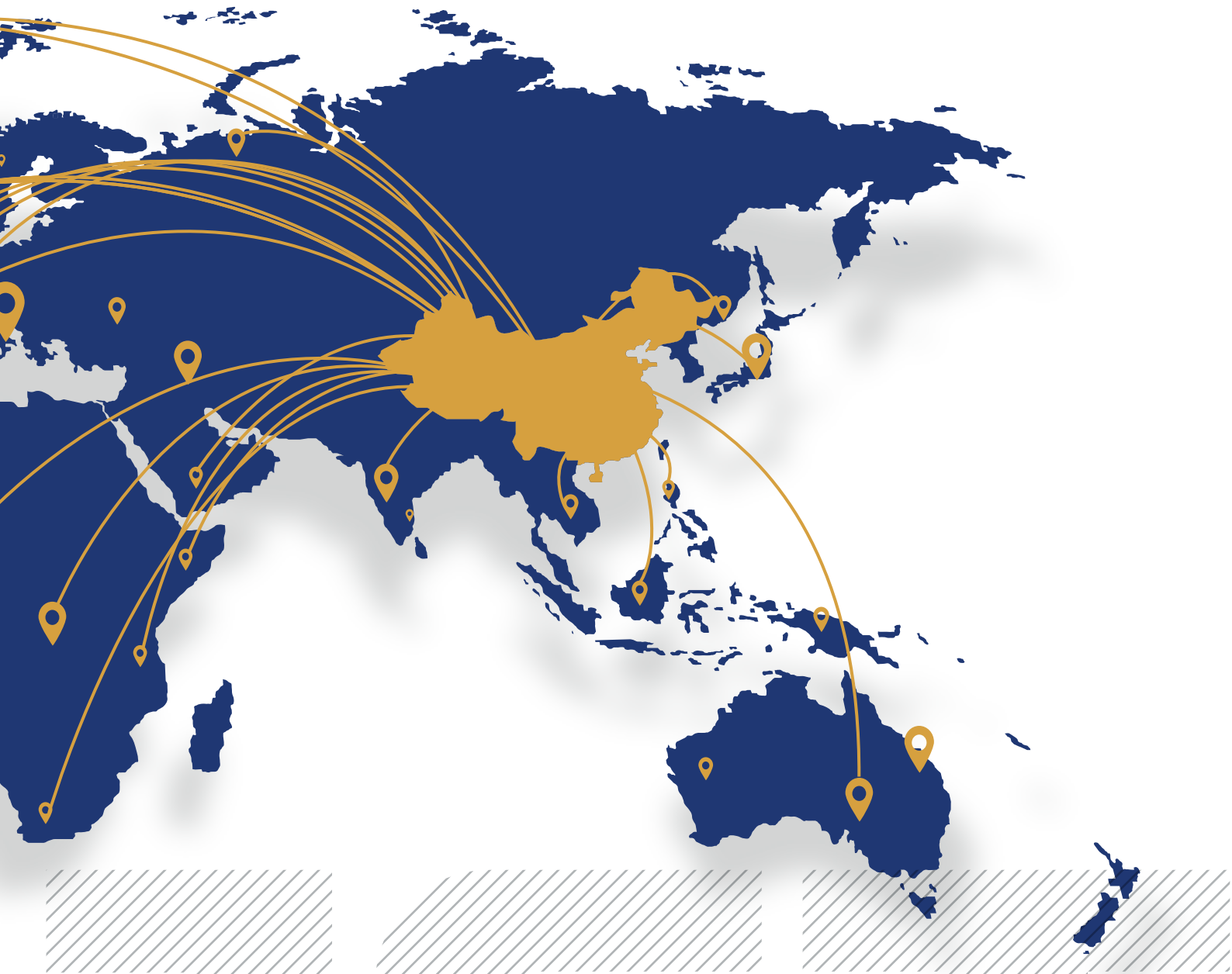
	<b>SLACK ADJUSTER</b>
	CY NO.: CY02310 ORG NO.: 5320-3502237 Style: 1HOLE 10TEETH Arm Length: 125 Bushing: 12.7

# 04 Development



*focus  
professional  
quality*





QINGDAO JUSTAR IMPORT AND  
EXPORT CO.,LTD

---

**E-mail:**

teo@cnjustar.com

**Tel:**

+86-532-58510532

**Address:**

No.1 Xiangling Road ,Laoshan  
District, Qingdao ,China

**Factory:**

ZhanHua Industrial Park, ZhanHua,  
BinZhou ,ShanDong ,China